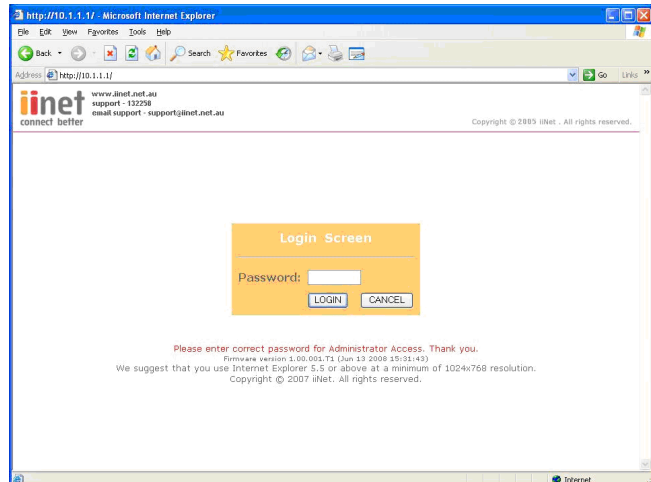


Upgrading the Firmware on your Belkin VoIP Router

Step 1 Open Internet Explorer and type in the Address Bar <http://10.1.1.1>

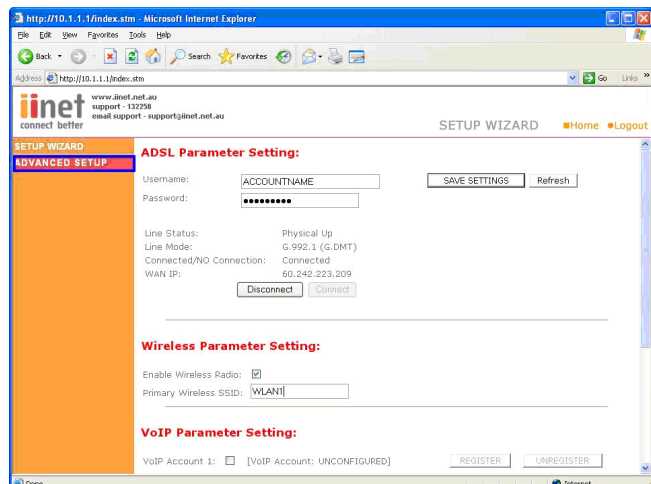
(You will be presented with the following screen)



Step 2 In the password field type in **admin** and click **LOGIN**

Step 3 Click **Advanced Setup**

(You will be presented with the following screen)



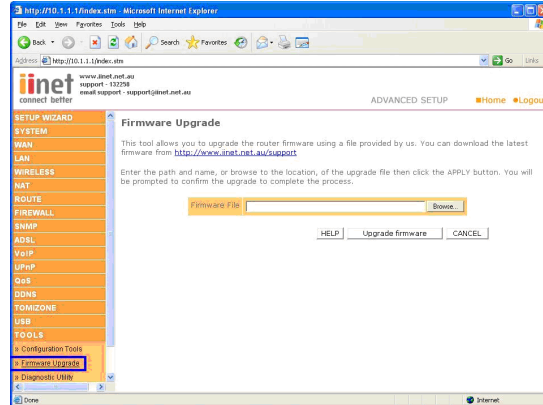
F1P1242EGau



F1P1242ENau

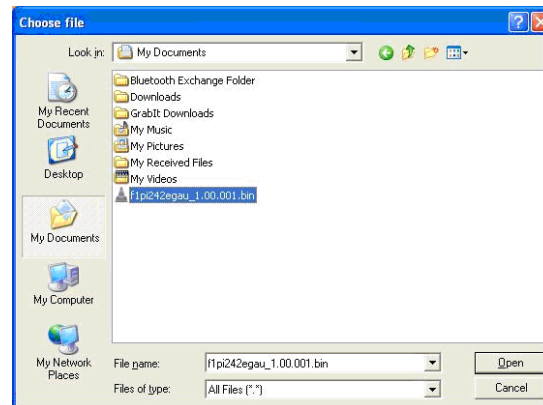
Step 4 Click Tools then Firmware Upgrade

(You will be presented with the following screen)



Step 5 Click Browse, find the file in c:\Belkin\F1PI24EGau

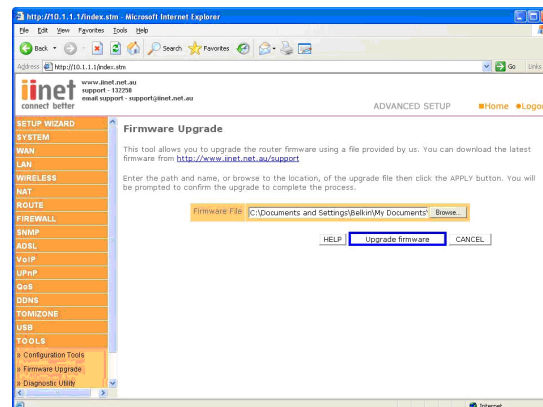
(You will be presented with the following screen)



Step 6 Click Open

Step 7 Click Upgrade Firmware, then OK

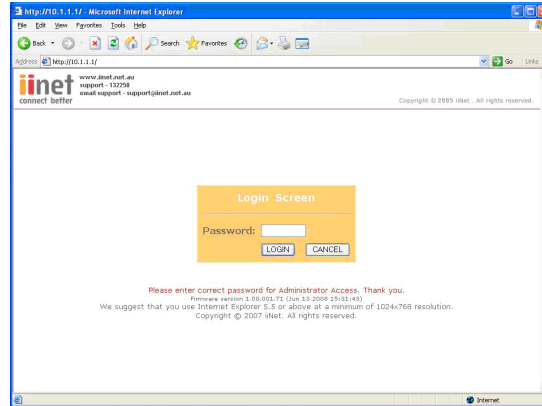
(You will be presented with the following screen)



You will now need to restore the unit to Factory Defaults

Step 1 Open Internet Explorer and type in the Address Bar <http://10.1.1.1>

(You will be presented with the following screen)

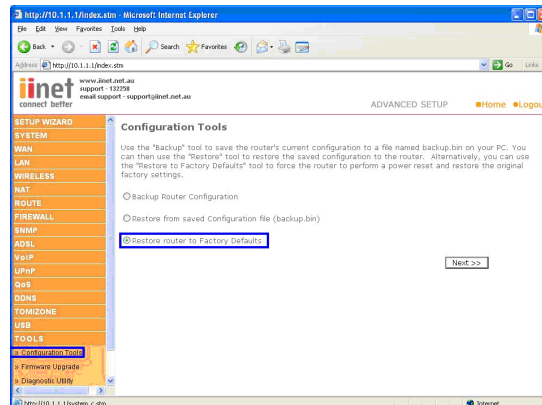


Step 2 In the password field type in **admin** and click **LOGIN**

Step 3 Click **Advanced Setup**

Step 4 Click **Tools** then **Configuration Tools**

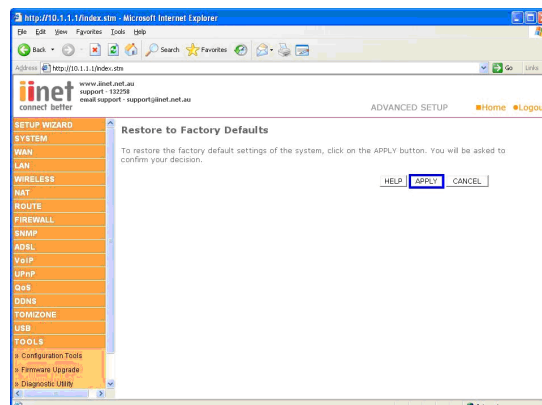
(You will be presented with the following screen)



Step 5 Place the **Dot** next to **Restore Router to Factory Defaults** and click **Next**

Step 6 Click **APPLY**

(You will be presented with the following screen)

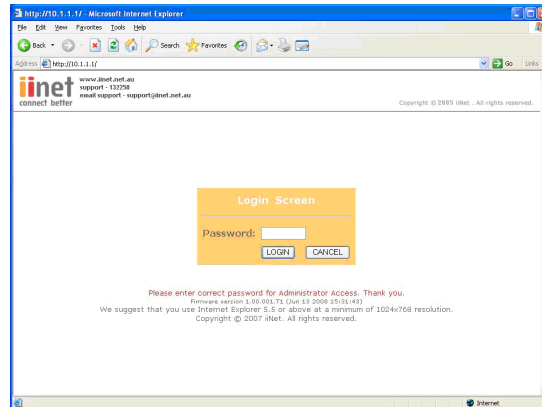


You will now need to re-enter your Username and Password Settings

Please do not use a saved configuration as it will not function correctly with the updated firmware.

Step 1 Open Internet Explorer and type in the Address Bar <http://10.1.1.1>

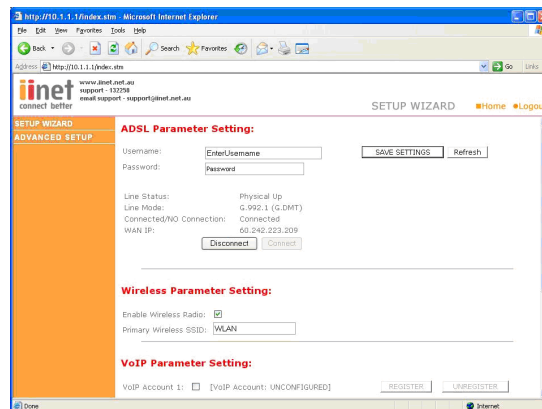
(You will be presented with the following screen)



Step 2 In the password field type in **admin** and click **LOGIN**

Step 3 Under ADSL Parameter Setting Enter your **Username** and **Password** into the fields

(You will be presented with the following screen)



Step 4 Click **Save Settings**